



# Boise Police Department Statistical Summary

Calendar Year 2015

## Operations Report

Calls for Service

Prepared by the  
Crime Analysis Unit,  
3/8/2016

### Overview

#### Reports

Operations **1**

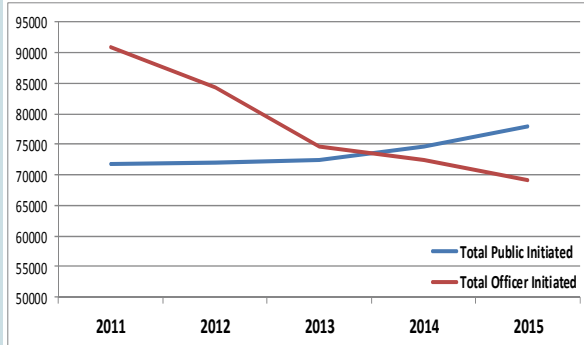
Crime **3**

Traffic **6**

Domestic  
Violence **7**

Mental Health **8**

	2011	2012	2013	2014	2015	2014-2015 %change
<b>Total Calls for Service</b>	<b>164,924</b>	<b>161,062</b>	<b>148,173</b>	<b>148,093</b>	<b>148,347</b>	<b>0.2%</b>
<i>Total Public Initiated CFS</i>	<i>73,828</i>	<i>75,434</i>	<i>73,402</i>	<i>75,613</i>	<i>78,955</i>	<i>4.4%</i>
911	4,002	3,719	3,516	3,161	2,518	-20.3%
Non-Emergency Telephone	69,826	71,715	69,886	72,452	76,437	5.5%
Officer Initiated	91,096	85,628	74,771	72,480	69,392	-4.3%
<b>Average Response Time (Dispatch to Arrival)*</b>	<b>8.04</b>	<b>8.31</b>	<b>8.37</b>	<b>8.52</b>	<b>8.78</b>	<b>3.1%</b>
Priority 3	3.37	3.50	3.58	3.80	3.66	-3.7%
Priority 2	8.35	8.57	6.92	7.13	7.45	4.5%
Priority 1	12.40	12.88	11.00	10.90	11.03	1.2%



Pri	Avg Hold Time	Avg Time on Call	Avg Ofcs/Call
1	0:32:03	0:35:46	1.5
2	0:04:07	0:40:16	2.4
3	0:00:55	0:29:53	5.8
<b>Total</b>	<b>0:14:11</b>	<b>0:38:23</b>	<b>2.2</b>

### EXECUTIVE HIGHLIGHTS

- 9.8% Increase in Reportable Crime
- 12-25% increase in Narcotics, Fraud, Theft, and Other Offenses
- Public-Initiated Calls Steadily Rising
- Burglaries continue decline; historic lows
- Crashes involving bikes at 5 year low

#### Public Initiated Calls for Service by Priority:

	2011	2012	2013	2014	2015	2014-2015 %change
<b>Total Public Initiated</b>	<b>71,835</b>	<b>71,944</b>	<b>72,454</b>	<b>74,595</b>	<b>77,925</b>	<b>4.5%</b>
<b>% Public Initiated to Total</b>	<b>44.2%</b>	<b>46.1%</b>	<b>49.3%</b>	<b>50.7%</b>	<b>53.0%</b>	
1	27,355	27,980	27,424	28,456	29,449	3.5%
2	42,601	42,164	43,230	44,415	46,668	5.1%
3	1,879	1,800	1,800	1,724	1,808	4.9%

#### Officer Initiated Calls for Service by Priority:

	2011	2012	2013	2014	2015	2014-2015 %change
<b>Total Officer Initiated</b>	<b>90,830</b>	<b>84,205</b>	<b>74,549</b>	<b>72,409</b>	<b>69,208</b>	<b>-4.4%</b>
<b>% Officer Initiated to Total</b>	<b>55.8%</b>	<b>53.9%</b>	<b>50.7%</b>	<b>49.3%</b>	<b>47.0%</b>	
1	23,465	22,511	21,305	21,357	22,068	3.3%
2	67,197	61,541	53,122	50,915	47,017	-7.7%
3	168	153	122	137	123	-10.2%



# Operations Report

DRs, Arrests, and Citations

## Top 20 Citations

Misd & Felony

		2011	2012	2013	2014	2015	2014-2015 %change
Failure to Appear for Misdemeanor Cita-	1111						
Drug Paraphernalia-Use or Possess With	1049						
Controlled Substance	954						
Theft-Petit	763						
Probation Violation-Misdemeanor	748						
Driving Under the	692						
Driving Without Priv-	573						
POSSESSION OF OPEN CONTAINER	562						
Disturbing the Peace	425						
Battery	401						
Drivers License-Fail to Purchase or Inva-	384						
Driving-Inattentive or	319						
Burglary	318						
Controlled Substance -Possession of Mari-	310						
Alcoholic Beverage-Under 21 YOA Un-lawful to Purchase,	303						
CAMPING IN A PUBLIC PLACE	296						
Vehicle Insurance-(2nd or Subsequent Offense) Fail to Provide Proof of Insur-	286						
Drivers License or Commercial Drivers	272						
Arrests & Seizures-Resisting or Ob-	270						
Vehicle Insurance-Fail to Provide Proof of Insurance	259						
<b># of Reports Written</b>		<b>31,515</b>	<b>30,407</b>	<b>29,238</b>	<b>28,458</b>	<b>30,416</b>	<b>6.9%</b>
<b>Jail Arrests (charges)</b>		<b>7,280</b>	<b>6,728</b>	<b>6,476</b>	<b>6,696</b>	<b>7,606</b>	<b>13.6%</b>
Felony		1,437	1,446	1,574	1,693	1,922	13.5%
Misdemeanor		5,843	5,282	4,902	5,003	5,685	13.6%
<b>Total Citations/ Court Cases</b>		<b>43,747</b>	<b>50,077</b>	<b>42,836</b>	<b>42,594</b>	<b>37,539</b>	<b>-11.9%</b>
Infractions		30,034	32,721	26,452	25,873	21,593	-16.5%
Misdemeanors		11,690	13,902	12,873	12,965	12,118	-6.5%
Felony		2,023	3,454	3,511	3,756	3,828	1.9%

## Top 20 Call Types (City-wide)

Call Type	Call Description	Count	
WELFCK	Welfare Check	5178	↑
1050PD	Accident - Non-injury	4044	↓
ALMBURG	Burglary Alarm	3074	↑
CITASST	Citizen's Assist	2293	↑
THEFTR	Theft Report	2147	↓
RECKATL	Reckless Driver	2022	↑
PROBSUB	Problem w/ Subject	1860	↑
SUSPSUB	Check for Suspicious Subject	1846	↑
SUSPVEH	Check for Suspicious Vehicle	1731	↑
1055ATL	Reckless Driver ATL	1706	↑
SUPINFO	Supplemental Info	1328	↑
SUICSUB	Suicidal Subject	1237	↑
NOISE	Noise Complaint	1194	↑
FRAUDR	Fraud Report	1161	↓
TRAFHAZ	Traffic Hazard	1151	↓
911	Welfare Check/911 Hang-Up	1069	↓
DOMPHYS	Domestic Violence Physical	1066	↓
AV	Abandoned Vehicle	1059	↑
NARC	Narcotics Violation	1021	↑
VBURGR	Vehicle Burglary Report	958	↑



# Crime Report

Group A Index Crimes

	Jan-Dec 2011	Jan-Dec 2012	Jan-Dec 2013	Jan-Dec 2014	Jan-Dec 2015	2014-2015 %change	2015 Cleared	% Cleared
<b>Murder Total</b>	<b>1</b>	<b>2</b>	<b>3</b>	<b>4</b>	<b>1</b>	<b>-75.0%</b>	<b>1</b>	<b>100.0%</b>
<b>Rape Total</b>	<b>84</b>	<b>108</b>	<b>100</b>	<b>102</b>	<b>107</b>	<b>4.9%</b>	<b>36</b>	<b>33.6%</b>
<b>Robbery Total</b>	<b>60</b>	<b>65</b>	<b>44</b>	<b>58</b>	<b>45</b>	<b>-22.4%</b>	<b>18</b>	<b>40.0%</b>
<b>Aggravated Assault Total</b>	<b>330</b>	<b>380</b>	<b>368</b>	<b>412</b>	<b>418</b>	<b>1.5%</b>	<b>243</b>	<b>58.1%</b>
Domestic	28	26	43	48	54	12.5%	43	79.6%
Attempted Strangulation	59	65	82	86	88	2.3%	66	75.0%
Injury to Child	15	18	17	6	9	50.0%	6	66.7%
Law Enforcement Officer	3	6	4	5	6	20.0%	6	100.0%
All Other	225	265	222	267	261	-2.2%	122	46.7%
<b>Burglary Total</b>	<b>818</b>	<b>915</b>	<b>815</b>	<b>710</b>	<b>668</b>	<b>-5.9%</b>	<b>58</b>	<b>8.7%</b>
Commercial	208	246	214	133	141	6.0%	16	11.3%
Residential	610	669	601	577	527	-8.7%	42	8.0%
<b>Theft Total</b>	<b>4497</b>	<b>4376</b>	<b>3807</b>	<b>3714</b>	<b>4184</b>	<b>12.7%</b>	<b>612</b>	<b>21.1%</b>
Pocket Picking	5	5	9	3	4	33.3%	0	0.0%
Purse Snatching	2	5	11	2	6	200.0%	0	0.0%
Shoplifting	988	941	671	753	871	15.7%	535	61.4%
From Building	1014	947	624	509	572	12.4%	77	13.5%
From Coin-op Machine	4	5	9	0	2	100.0%	0	0.0%
From Motor Vehicle, and Parts	1153	1196	1004	912	1147	25.8%	40	3.5%
All Other	1331	1277	1479	1535	1582	3.1%	111	7.0%
<b>Motor Vehicle Theft Total</b>	<b>174</b>	<b>170</b>	<b>179</b>	<b>207</b>	<b>286</b>	<b>38.2%</b>	<b>62</b>	<b>21.7%</b>
<b>Arson Total</b>	<b>55</b>	<b>55</b>	<b>49</b>	<b>47</b>	<b>48</b>	<b>2.1%</b>	<b>12</b>	<b>25.0%</b>
<b>Part 1 / Group A Subtotal</b>	<b>6,019</b>	<b>6,071</b>	<b>5,365</b>	<b>5,254</b>	<b>5,757</b>	<b>9.6%</b>	<b>1042</b>	<b>19.8%</b>



# Crime Report

Group A, Part 2

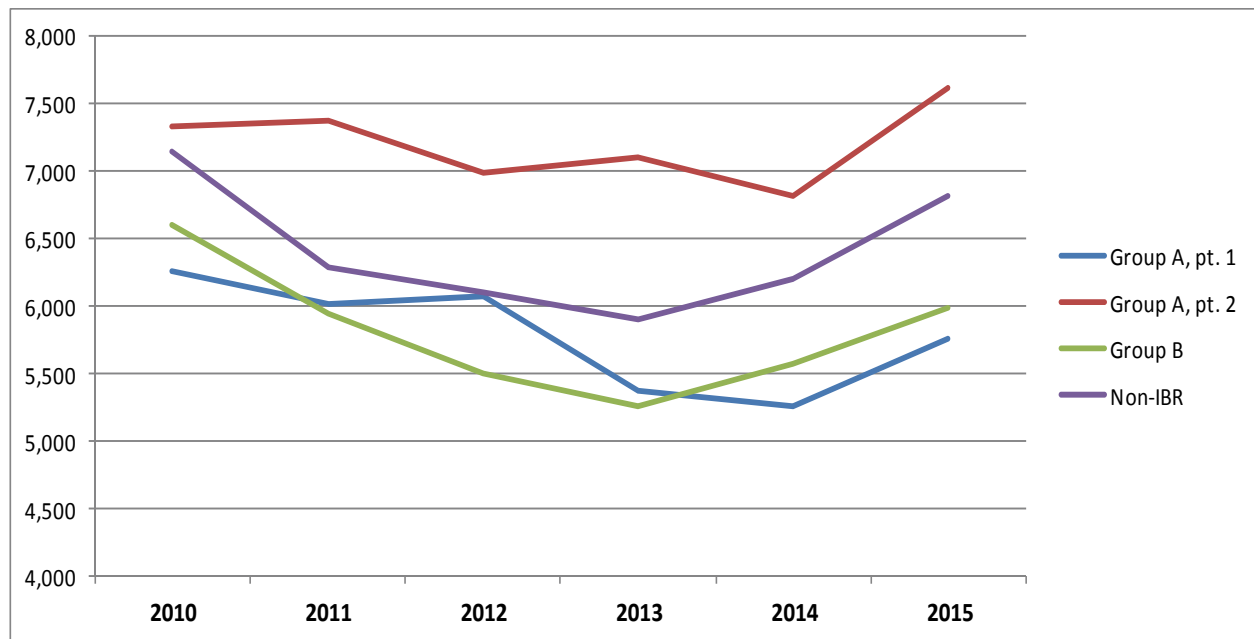
Other Reported Group A Crimes (IBR)	Jan-Dec 2011	Jan-Dec 2012	Jan-Dec 2013	Jan-Dec 2014	Jan-Dec 2014	2014-2015 %change	2015 Cleared	% Cleared
<b>Sexual Assault (Not Rape)</b>	143	138	126	160	160	0.0%	33	20.6%
Forcible Sodomy	38	34	19	18	29	61.1%	8	27.6%
Sex Asslt W/ Object	20	24	34	44	51	15.9%	6	11.8%
Forcible Fondling	85	80	73	98	80	-18.4%	19	23.8%
<b>Sexual Assault (No Force)</b>	19	16	14	22	22	0.0%	10	45.5%
Incest	0	5	4	6	7	16.7%	3	42.9%
Statutory Rape	19	11	10	16	15	-6.3%	7	46.7%
<b>Assault / Battery</b>	1,395	1,366	1,451	1,448	1,502	3.7%	870	57.9%
Domestic	395	364	502	457	500	9.4%	254	50.8%
Injury to Child	73	74	77	106	95	-10.4%	38	40.0%
Law Enforcement Officer	39	41	42	55	49	-10.9%	48	98.0%
All Other	888	887	830	830	858	3.4%	437	50.9%
<b>Intimidation / Stalking</b>	231	230	230	312	306	-1.9%	93	30.4%
<b>Kidnapping / Enticement</b>	22	20	22	25	19	-24.0%	8	42.1%
<b>Porno/Obscene Material</b>	29	25	19	23	54	134.8%	18	33.3%
<b>Prostitution Offenses</b>	0	8	9	12	8	-33.3%	4	50.0%
<b>Forgery &amp; Counterfeiting</b>	166	185	224	141	178	26.2%	17	9.6%
<b>Fraud</b>	817	976	1,032	1,141	1,298	13.8%	131	10.1%
False Pretense/Swindle	246	269	230	238	230	-3.4%	47	20.4%
Credit Card / ATM	405	400	510	479	431	-10.0%	56	13.0%
Impersonation	154	284	257	377	597	58.4%	26	4.4%
Wire	12	23	35	47	40	-14.9%	2	5.0%
<b>Embezzlement</b>	54	34	14	31	35	12.9%	13	37.1%
<b>Extortion/Blackmail</b>	3	9	11	4	2	-50.0%	0	0.0%
<b>Bribery</b>	0	1	0	0	1	100.0%	0	0.0%
<b>Gambling Offenses</b>	1	0	5	0	1	100.0%	0	0.0%
<b>Vandalism Total</b>	2,365	1,977	1,898	1,395	1,433	2.7%	207	14.4%
Graffiti	1,060	613	449	258	257	-0.4%	2	0.8%
Damaged Property	1,305	1,364	1,449	1,137	1,176	3.4%	205	17.4%
<b>Drug Violations</b>	1,123	1,044	1,083	1,186	1,457	22.8%	1308	89.8%
<b>Drug Paraphernalia</b>	771	764	767	767	964	25.7%	892	92.5%
<b>Stolen Property Offenses</b>	45	51	74	30	38	26.7%	18	47.4%
<b>Weapon Law Violations</b>	191	149	114	123	143	16.3%	109	76.2%
<b>Part 2 /Group A Subtotal</b>	<b>7,375</b>	<b>6,993</b>	<b>7,093</b>	<b>6,820</b>	<b>7,621</b>	<b>11.7%</b>	<b>3,731</b>	<b>49.0%</b>
<b>IBR Group A Totals</b>	<b>13,394</b>	<b>13,064</b>	<b>12,458</b>	<b>12,074</b>	<b>13,378</b>	<b>10.8%</b>	<b>4,773</b>	<b>35.7%</b>



# Crime Report

Group B

Group B Crimes	Jan-Dec 2011	Jan-Dec 2012	Jan-Dec 2013	Jan-Dec 2014	Jan-Dec 2015	2014-2015 %change	2015 Cleared	% Cleared
<b>Bad Checks</b>	44	34	54	56	52	-7.1%	12	23.1%
<b>Curfew / Loitering</b>	43	47	49	27	14	-48.1%	14	100.0%
<b>Disorderly Conduct</b>	457	434	393	345	369	7.0%	256	69.4%
<b>DUI</b>	1,371	1,167	1,064	1,054	1,177	11.7%	1,158	98.4%
<b>Drunkenness</b>	202	156	115	101	108	6.9%	107	99.1%
<b>Family Offenses (Nonviolent)</b>	108	97	120	138	112	-18.8%	55	49.1%
<b>Liquor Law Violations</b>	463	435	410	437	365	-16.5%	345	94.5%
<b>Peeping Tom</b>	11	9	8	4	0	-100.0%	0	NA
<b>Runaway</b>	266	318	216	301	334	11.0%	316	94.6%
<b>Trespassing</b>	309	368	355	412	404	-1.9%	206	51.0%
<b>All Other Offenses</b>	2,662	2,435	2,474	2,696	3,054	13.3%	2,073	67.9%
<b>Group B Crime Subtotal</b>	<b>5,936</b>	<b>5,500</b>	<b>5,258</b>	<b>5,571</b>	<b>5,989</b>	<b>7.5%</b>	<b>4,542</b>	<b>75.8%</b>
<b>Group A and B Subtotal</b>	<b>19,330</b>	<b>18,564</b>	<b>17,716</b>	<b>17,645</b>	<b>19,367</b>	<b>9.8%</b>	<b>9,315</b>	<b>48.1%</b>
<b>Traffic Offenses (non-accident)</b>	2,072	1,958	1,924	1,957	2,018	3.1%	1,624	80.5%
<b>Other Non-IBR Offenses</b>	4,218	4,147	3,972	4,248	4,793	12.8%	1,092	22.8%
<b>Non-IBR Subtotal</b>	<b>6,290</b>	<b>6,105</b>	<b>5,896</b>	<b>6,205</b>	<b>6,811</b>	<b>9.8%</b>	<b>2,716</b>	<b>39.9%</b>
<b>Grand Total</b>	<b>25,620</b>	<b>24,669</b>	<b>23,612</b>	<b>23,850</b>	<b>26,178</b>	<b>9.8%</b>	<b>12,031</b>	<b>46.0%</b>



## Top 10 Traffic Offenses



## Traffic Crashes and Injuries

		Jan-Dec 2011	Jan-Dec 2012	Jan-Dec 2013	Jan-Dec 2014	Jan-Dec 2015*	2014-2015 %change
Exceeding Speed Limit	6208						
Safety Restraint - Fail to Use	4811	Fatality 5	4	8	7	8	14.3%
Insurance - Fail to Provide	3728	Incapacitating Injury 140	136	132	128	136	6.3%
Following too Closely	1137	Non-Incapacitating Injury 360	459	494	504	577	14.5%
Fail to Register Vehicle	743	Possible Injury 630	654	740	773	789	2.1%
Driving Without Privileges	532	Property Damage 1871	1909	2130	2196	1123	-48.9%
Fail to Obey Traffic Control Device	422	*Non-Reportable 217	177	189	234	1342	473.5%
Stop/Yield Sign Violations	393	<b>Total</b>	<b>3223</b>	<b>3339</b>	<b>3693</b>	<b>3842</b>	<b>3.5%</b>
Left Turn, Fail to Yield	326						
Inattentive Driving	320						

\*ITD has not finalized its statistics for 2015; many unevaluated crash incidents appear as "non-reportable"

### Motorcycles and Scooters (subset of all crash events)

		2011	2012	2013	2014	2015	%change
Fatality	3	1	2	2	4	100.0%	
Incapacitating Injury	20	18	19	15	19	26.7%	
Non-Incapacitating Injury	25	25	42	26	30	15.4%	
Possible Injury	20	15	10	11	17	54.5%	
Property Damage	9	9	17	14	8	-42.9%	
Non-Reportable	3	4	3	3	7	133.3%	
<b>Total</b>	<b>80</b>	<b>72</b>	<b>93</b>	<b>71</b>	<b>85</b>	<b>19.7%</b>	

### Bicycles (subset of all crash events)

		2011	2012	2013	2014	2015	%change
Fatality	0	0	2	1	0	-100.0%	
Incapacitating Injury	15	21	18	21	17	-19.0%	
Non-Incapacitating Injury	67	91	66	55	57	3.6%	
Possible Injury	56	36	38	41	34	-17.1%	
Property Damage	2	7	5	1	0	-100.0%	
Non-Reportable	12	6	10	10	9	-10.0%	
<b>Total</b>	<b>152</b>	<b>161</b>	<b>139</b>	<b>129</b>	<b>117</b>	<b>-9.3%</b>	

### Pedestrians (subset of all crash events)

		2011	2012	2013	2014	2015	%change
Fatality	0	0	3	2	0	-100.0%	
Incapacitating Injury	17	7	12	18	16	-11.1%	
Non-Incapacitating Injury	25	19	30	31	26	-16.1%	
Possible Injury	17	11	16	14	17	21.4%	
Property Damage	1	1	0	1	0	-100.0%	
Non-Reportable	1	3	4	4	3	-25.0%	
<b>Total</b>	<b>61</b>	<b>41</b>	<b>65</b>	<b>70</b>	<b>62</b>	<b>-11.4%</b>	

## Top 10 Contributing Circumstances

Following Too Close	977
Failed to Yield	723
Inattention	534
Failed to Obey Signal	212
Improper Lane Change	186
Improper Turn	140
Alcohol Impaired	126
Other	114
Improper Backing	87
Failed to Maintain Lane	70



# Domestic Violence

Reports and Calls for Service

<b>Felony Offenses:</b>	<b>2011</b>	<b>2012</b>	<b>2013</b>	<b>2014</b>	<b>2015</b>	<b>2014-2015 % Difference</b>
Domestic Aggravated Battery/Strangulation	87	91	114	125	123	-1.6%
Domestic Violence Child Present	3	10	13	5	12	140.0%
Domestic Violence Victim Pregnant	1	1	1	1	0	-100.0%
<b>Total DV Felony Offenses:</b>	<b>102</b>	<b>76</b>	<b>91</b>	<b>131</b>	<b>135</b>	<b>3.1%</b>
<b>Misdemeanor Offenses:</b>	<b>2011</b>	<b>2012</b>	<b>2013</b>	<b>2014</b>	<b>2015</b>	<b>2014-2015 % Difference</b>
Domestic Simple Battery	409	371	386	323	365	13.0%
Domestic Violence Child Present	70	81	108	127	128	0.8%
Domestic Violence Child Present/victim pregnant	2	1	1	4	1	-75.0%
Domestic Violence Victim Pregnant	8	3	8	3	6	100.0%
<b>Total DV Misdemeanor Offenses:</b>	<b>525</b>	<b>536</b>	<b>530</b>	<b>489</b>	<b>500</b>	<b>2.2%</b>
<b>Total DV Offenses:</b>	<b>627</b>	<b>612</b>	<b>621</b>	<b>620</b>	<b>635</b>	<b>2.4%</b>

<b>Other Offenses:</b>	<b>2011</b>	<b>2012</b>	<b>2013</b>	<b>2014</b>	<b>2015</b>	<b>2014-2015 % Difference</b>
Stalking	67	61	71	104	104	0.0%
Domestic Assault	7	8	14	12	7	-41.7%
Sexual Assault	143	138	126	159	158	-0.6%
Sexual Assault (Statutory Rape/Incest)	19	16	14	23	18	-21.7%
Destruction of a Telecommunication Device	20	31	23	27	24	-11.1%

*\*Not limited to domestic*

## Domestic Violence & Other Calls for Service Statistics:

	<b>2011</b>	<b>2012</b>	<b>2013</b>	<b>2014</b>	<b>2015</b>	<b>2014-2015 % Difference</b>
Domestic Battery Report	144	162	181	166	169	1.8%
Domestic Physical	1114	1108	1147	1116	1090	-2.3%
Domestic Threat	51	63	48	51	38	-25.5%
Domestic Verbal	952	962	982	996	1017	2.1%
Family Fight	458	460	459	472	493	4.4%
No Contact Order Violation	220	223	274	262	226	-13.7%
PO Violation	91	76	72	82	105	28.0%
Sexual Assault	274	249	265	272	278	2.2%
<b>Total DV Calls for Service</b>	<b>3304</b>	<b>3303</b>	<b>3428</b>	<b>3417</b>	<b>3416</b>	<b>0.0%</b>



# Mental Health

Reports and Calls for Service

Calls for Service	2005	2006	2007	2008	2009	2010	2011	2012	2013	2014	2015	2014-2015 % Change
Mental Hold	198	92	96	71	69	58	109	65	73	69	52	-24.6%
Attempted Suicide	60	44	75	61	58	61	65	70	91	62	80	29.0%
Hanging	24	20	12	8	20	6	8	10	5	14	9	-35.7%
Suicidal Subject	774	721	712	697	815	878	969	926	1063	1129	1254	11.1%
Overdose	358	386	408	420	400	439	440	372	346	382	395	3.4%
Welfare Check	4312	4456	4416	4095	3816	4209	4781	4788	4923	5202	5698	9.5%
<b>Total:</b>	<b>5726</b>	<b>5719</b>	<b>5719</b>	<b>5352</b>	<b>5178</b>	<b>5651</b>	<b>6372</b>	<b>6231</b>	<b>6501</b>	<b>6858</b>	<b>7488</b>	<b>9.2%</b>

## 2005 to 2014 Mental Hold Reports:

	2005	2006	2007	2008	2009	2010	2011	2012	2013	2014	2015	2014-2015 % Change
Mental Hold Reports	467	375	418	419	437	430	435	432	446	427	555	30.0%
Suicide	7	9	7	8	5	4	12	13	13	18	5	-72.2%
Missing Person	151	103	124	100	92	75	88	81	69	79	88	11.4%

## Mental Hold Reports by Age

Mental Hold Reports	
Female	267
White	172
Unknown	80
Black	6
Hispanic	6
Asian/Pacific Islander	3
Male	283
White	178
Unknown	95
Black	6
Hispanic	4

